

**BATTERY OVERHEAT WARNING - TROUBLESHOOTING**  
**(Airplanes with NiCad Battery)**

**1. General**

- A. A troubleshooting charts are given to help the maintenance technician in system troubleshooting. Refer to the Model 208 Wiring Diagram Manual when you are to troubleshooting the system.
- B. For Airplanes 20800500 and On, and 208B2000 and On, the battery overheat warning system causes either the BATTERY HOT (amber) or BATTERY OVHT (red) CAS message to show on the PFD's, depending on the battery temperature. For Airplanes 2080001 thru 20800499 and 208B0001 thru 208B1999, a BATTERY HOT or BATTERY OVERHEAT warning light on annunciator panel comes on when the battery is overheated. For a general overview of the battery overheat warning system refer to Battery Overheat Warning - Description and Operation.
- C. Use the applicable charts that follow to troubleshoot battery overheat problems.

<b>Battery Overheat Problems</b>	<b>Troubleshooting Charts</b>
The HOT or OVERHEAT annunciator light does not go out. (Airplanes 2080001 thru 2080499 and 208B0001 thru 1999).	Figure 101
The HOT or OVERHEAT annunciator light does not come on when the when the annunciator test switch is pushed (Airplanes 2080001 thru 2080499 and 208B0001 thru 1999).	Figure 102
The HOT or OVHT CAS message does not come on when the battery sensor electrical connector is disconnected (Airplanes 2080500 and On and 208B2000 and On).	Figure 103
The HOT or OVHT CAS message does not come on. (Airplanes 2080500 and On and 208B2000 and On).	Figure 104

Figure 101 : Sheet 1 : HOT or OVERHEAT Annunciator Light Troubleshooting Chart (Airplanes 2080001 and On and 208B0001 and On)

A11590

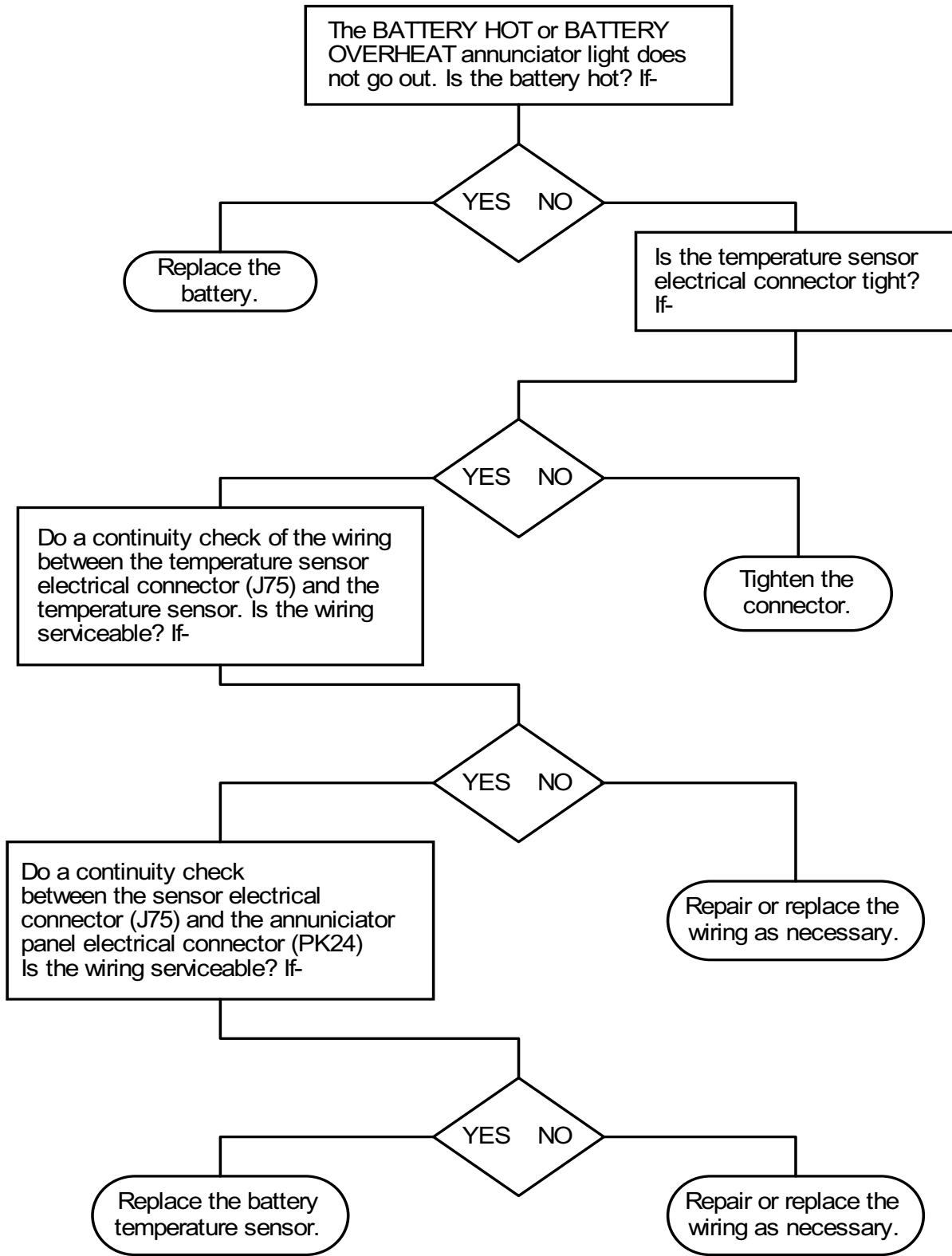


Figure 102 : Sheet 1 : Battery Overheat Annunciator Light Troubleshooting Chart (Airplanes 2080001 thru 2080499 and 208B001 thru 208B1999)

A11591

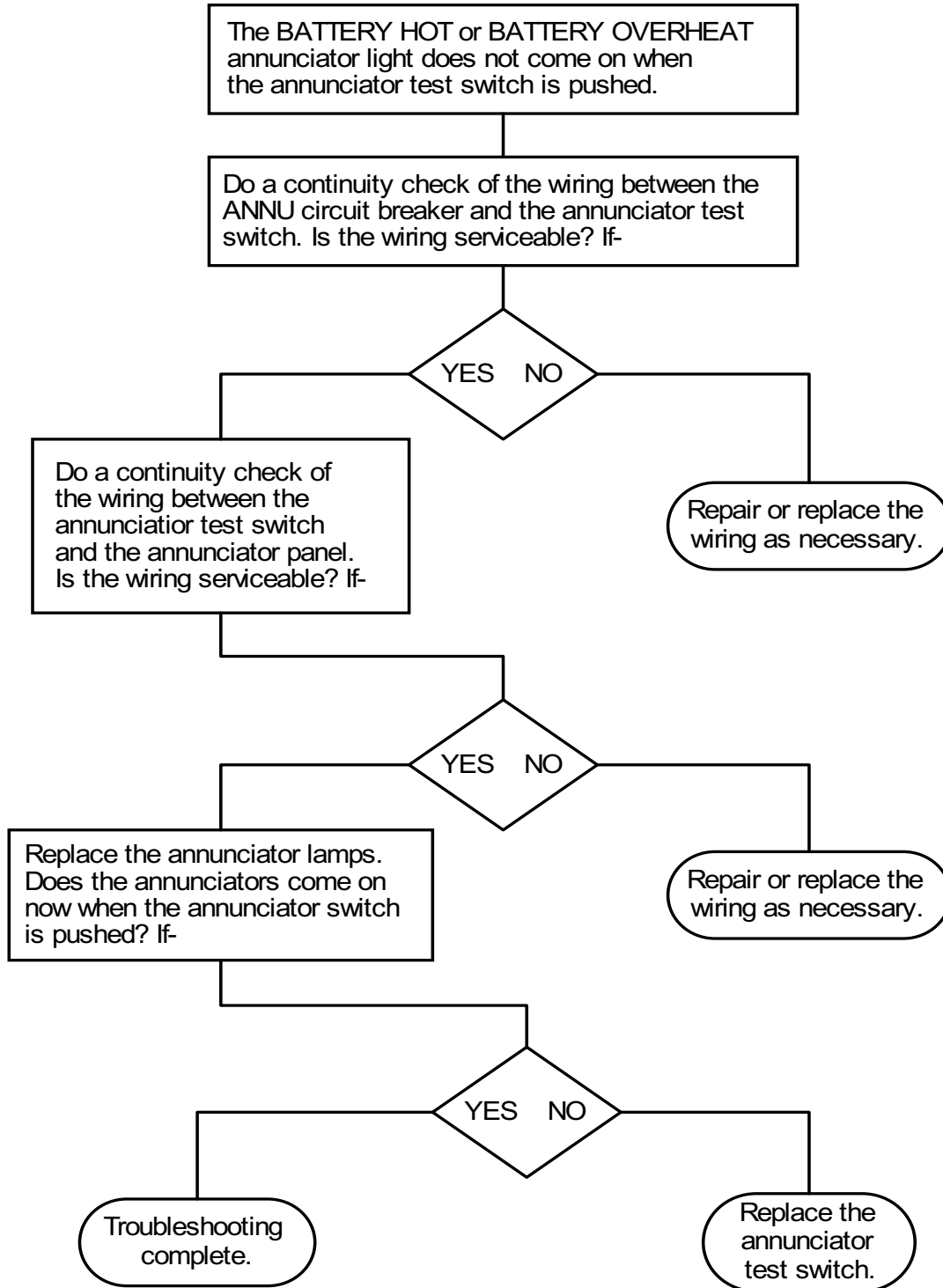


Figure 103 : Sheet 1 : Battery HOT or OVHT CAS Message Troubleshooting Chart (Airplanes 2080500 and On and 208B2000 and On)

A100439

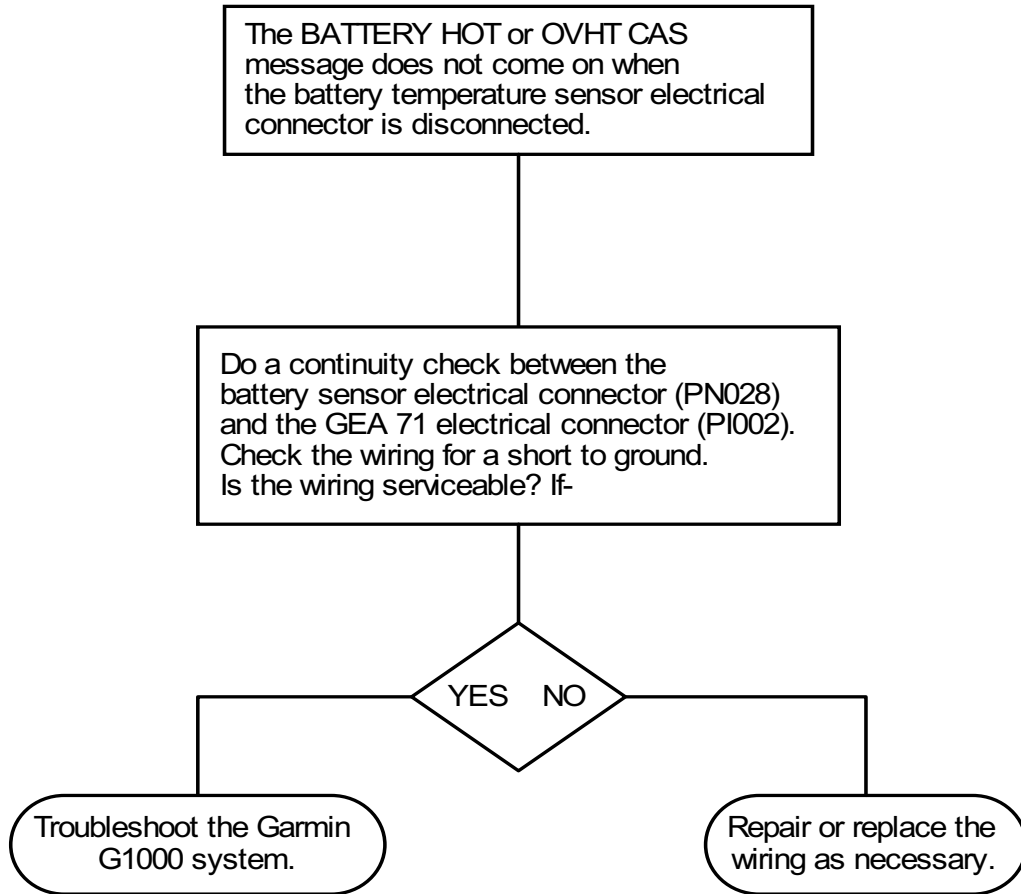


Figure 104 : Sheet 1 : Battery HOT or OVHT CAS Message Troubleshooting Chart

A100461

